



GOVERNMENT OF ANGUILLA  
 Anguilla Statistics Department  
**Tourism Statistics Summary**  
**May 2020**

**May 2020/2019**  
**ARRIVAL ANALYSIS**  
 Visitors - ↓ 99.98%  
 Tourists - ↓ 100.0%  
 Excursionists - ↓ 99.9%

## OVERVIEW

May's visitor arrivals continue to be at a near standstill as it records 3 visitors to Anguilla's shores. The COVID-19 global pandemic, which has negatively affected economies all over the world, prompted the closure of the country's borders and/or limits international travel to mitigate the spread of the virus.

Anguilla specifically, closed its borders on March 20, 2020 and remained closed throughout the months of April and May to prevent the spread of the virus. March's arrivals may have shown the initial effect of the global pandemic with a 59.0% decline in arrivals after showing an increase of 5.2% for February 2020 over its 2019 figure.

These three (3) visitors, were excursionists to the island whose main purpose was for business.

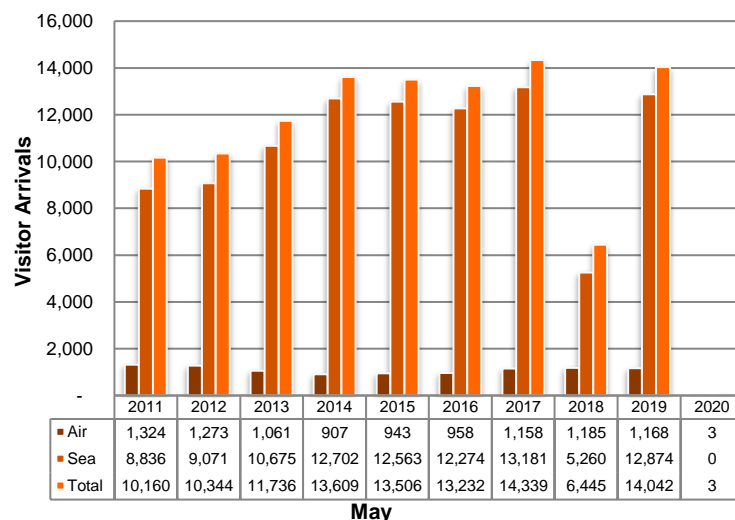


Figure 1: Visitor Arrivals: May 2011 – 2020

## PASSENGER MOVEMENT

Passenger arrivals, which include both visitors and residents for this period under review, measured a 99.96% decline from the 22,773 in 2019 to 10 passengers in 2020. This may have been due to the cross border travel restrictions internationally.

Anguilla's inward passenger movement by sea, facilitated 30.0% (3) arrivals with Sandy Ground (Road Bay) terminal being the sole seaport of entry. Passenger arrivals by air at the Clayton J. Lloyd International Airport accounted for 70.0% (7) of total passenger arrivals.

Departing passengers recorded a decline of 99.7%; with the total moving from 21,900 in 2019 to 72 passengers in 2020. The number of departures relative to arrivals may have consisted of visitors that remained after the closure of the borders, who were returning to their country of residence.

Of the three ports of exit, the two seaports cumulatively accounted for 8 (11.1%), of all departures; of which, the Blowing Point terminal facilitated the movement of 5 (62.5%) passengers and Sandy Ground 3 (37.5%) passengers.

By air, 64 (88.9%) passengers departed Anguilla through the Clayton J. Lloyd International Airport.

## TOURISTS (Stay-Over Visitors)

Tourists (stay-over visitors) to Anguilla for the month of May 2020 came to an abrupt stop as it recorded no tourist arrivals for the second consecutive month during 2020.

This is the lowest ever recorded figure for a May month, a 100.0% decline from its 2019 figure of 8,166, which was ranked the highest recorded arrivals, in this month, from as far back as 1993.

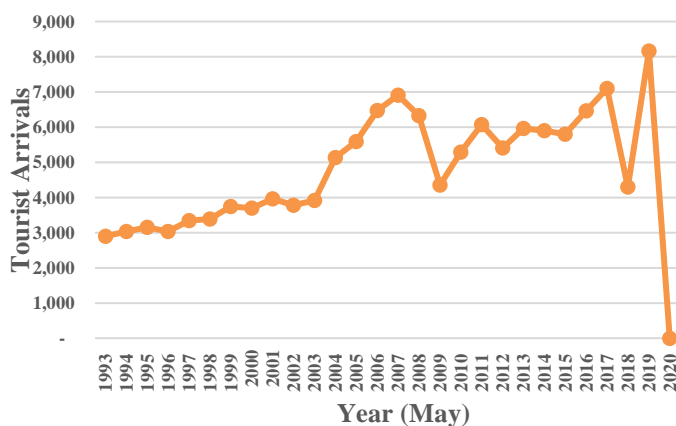


Figure 2: Tourist Arrivals, May 1993 – 2020

## EXCURSIONISTS (Day Trippers)

Excursionist arrivals for this period under review recorded a total of 3 arrivals, down from the recorded figure of 5,876 in May 2019, a 99.9% decline. The trend of previous years shows that excursionist arrivals have not returned to their pre hurricane Irma position. Additionally, the global pandemic resulting in limited travel and the closure of the ports, may have further impacted the arrivals of this type of visitor to register this month’s lowest recorded figure. The three recorded excursionist to Anguilla’s shores originated only from the other Caribbean Islands.

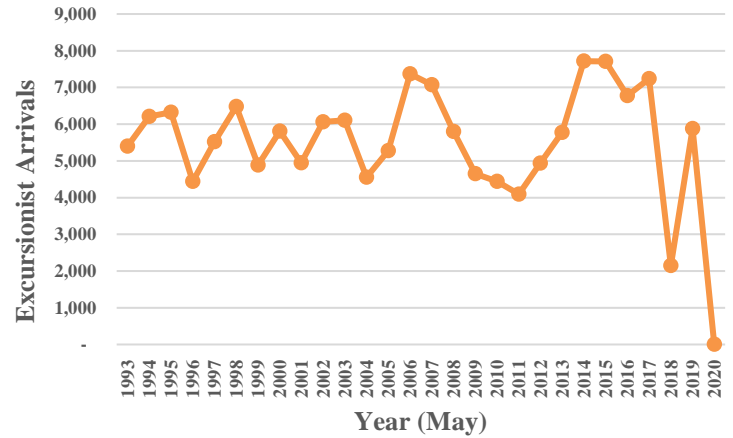


Figure 3: Excursionist Arrivals, May 1993 - 2020

This report, along with other Tourism Data, is available at the Government of Anguilla Statistics Department’s website: <http://gov.ai/statistics/tourism.htm>

ANGUILLA STATISTICS DEPARTMENT  
 P.O.BOX 60 | THE VALLEY | ANGUILLA  
 BRITISH WEST INDIES  
 Telephone: + (264) 497-5731 | Fax: + (264) 497-3986  
 Email: [statistics@gov.ai](mailto:statistics@gov.ai)

'Sound Statistics for Sustainable Development'