



Tourism Statistics Summary – November 2012

OVERVIEW

International visitor arrivals to Anguilla for the month November 2012 totalled 8,866. An 11.0% decrease over November 2011 arrivals due to the decrease in both types of visitors to Anguilla for the month under review.

Of the total visitor arrivals, 8,589 (96.9%) came for vacation and the other 277 (3.1%) came on business.

Visitor arrivals by air represented 13.6% of arrivals and the majority; 86.4%, of visitors entered by seaports.

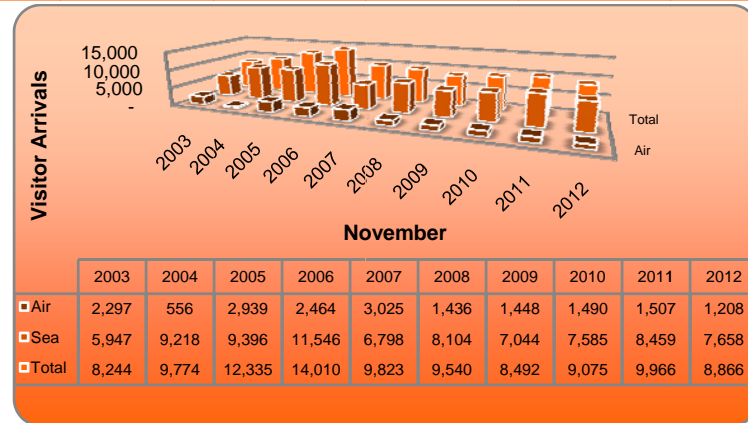


Figure 1: Visitor Arrivals: November 2003 – 2012

PASSENGER MOVEMENT

Passenger traffic, which includes both residents and visitors, decreased this month for both inbound and outbound movement relative to their corresponding figures for November 2011.

Arrivals recorded a decline of 6.6% over November 2011 with 15,308 persons. The seaports facilitated most passengers with 13,586 (88.8%) entries, of which the Blowing Point port recorded 12,259 (90.2%) passenger and the Sandy Ground port 1,327 (9.8%) passengers. The Clayton J. Lloyd International Airport facilitated 1,722 passenger entries (11.2%) of the total number of passengers.

Outbound passenger numbers decreased for the month of November to 14,902; a decline of 5.6%.

The seaports facilitated 13,331 (89.5%) departures, of which the main port of exit; the Blowing Point seaport handled 12,047 (90.4%) departures. The other seaport at Sandy Ground recorded 1,284 (9.6%) departures

Passengers flying out through the Clayton J. Lloyd International Airport totalled 1,571 departures, 10.5% of total passengers.

TOURIST (Stay-Over Visitors)

Tourist or stay-over visitor arrivals declined by 15.4% this month over November 2011, to 4,847 tourists. Tourist arrivals by air held a 23.9% share and the other 76.1% of stay-over visitors entered at the seaport. 99.7% of this type of visitor through the seaport used the Blowing Point seaport and 0.3% through the Sandy Ground port.

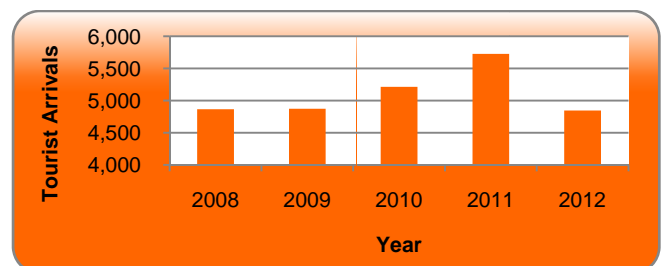


Figure 2: Tourist Arrivals, November 2008 - 2012

Tourists (Stay- Over Visitors)*continued*

The average intended length of stay of visitors this November, compared to November 2011, lengthened from 7.0 days to 7.2 days despite the decrease in it arrivals. The modal group for this period for visitors to Anguilla stayed between 4-7 days (53.1%). Visitors spending 1-3 days recorded by 20.9% of stay-over visitors; 8-15 days spent by 17.9%; 1.9% spent 16-22 days and 6.2% spent 23 or more days.

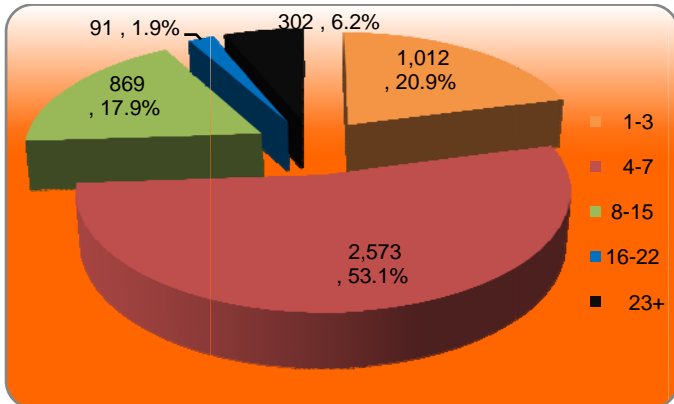


Figure 3: Tourist Arrivals by Length of Stay, November 2012

Tourist arrivals by markets reported increases in 5 and decreases in the other 5 source markets. Arrivals from “Dutch West Indies” recorded the highest decrease by 38.6% and the largest market increase was recorded by “Other” with 33.9%.

Anguilla’s largest source market the “USA” experienced a decline of 17.5%, with 3,295 Americans coming to Anguilla this November compared to the 3,994 in 2011.

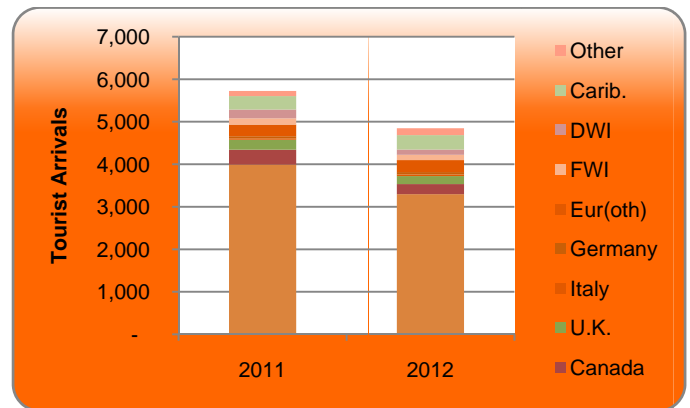


Figure 4: Tourist Arrivals by Country of Residence November 2011 & 2012

EXCURSIONISTS (Day Trippers)

Excursionist arrivals for November 2012, decline by 5.2%, over the last year November.

Most day-trippers 3,971 (98.8%) used the seaports as the gateway into the island. Of which, 67.4% entered at Blowing Point terminal and 32.6% at Sandy Ground. 48 (1.2%) of excursionist arrivals were recorded at the Clayton J. Lloyd International Airport.

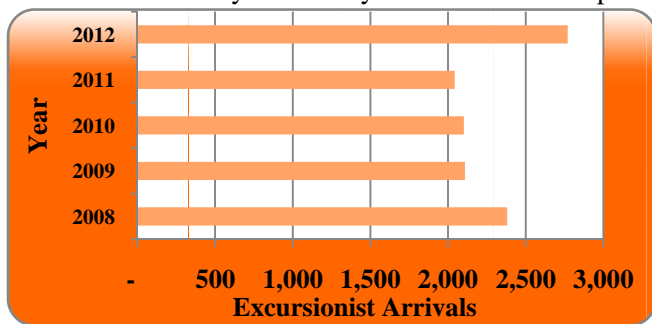


Figure 5: Excursionist Arrivals, November 2008–2012

The decrease in day tripper arrivals was mainly due to a decrease in 7 of the source markets, with the “French West Indies” experiencing the largest decrease of 43.5%, followed by “Canada” with 39.6%. The source markets which showed increases were “Other European” countries with 3.1% and the highest coming from our very one major source market, the “USA” with 10.3%. The Caribbean experienced no movement between the periods remaining firm.

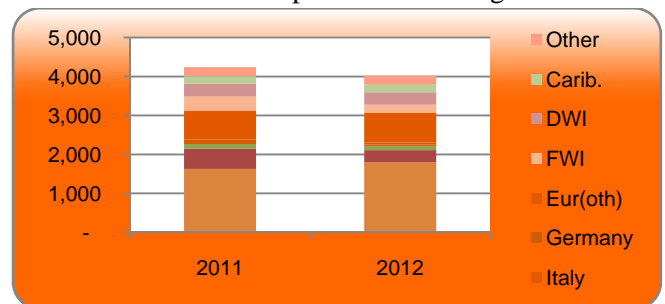


Figure 6: Excursionist Arrivals by Country of Residence November 2011 - 2012