



GOVERNMENT OF ANGUILLA
 Anguilla Statistics Department
Tourism Statistics Summary
January 2019

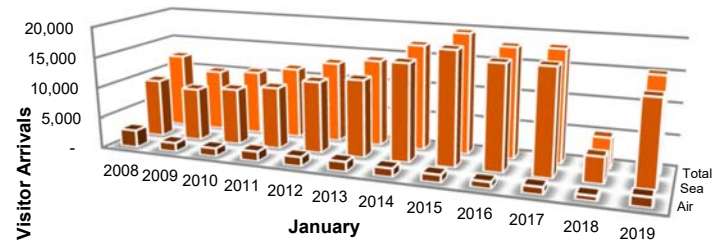
January 2019/2018
ARRIVAL ANALYSIS
 Visitors - ↑204.6%
 Tourists - ↑217.6%
 Excursionists – ↑187.8%

OVERVIEW

January’s visitor arrivals for the first month of the New Year 2019 totaled 15,181 visitors gracing our shores. This figure recorded an increase of 204.6% over its corresponding figure of 4,984 in January 2018. This period under review registered the 7th largest figure for a ‘January’ period as far back as 1993, with 2015 recording the largest number of visitors with 19,602, and January 2018 with the lowest with 4,984.

The increase in visitor arrivals for this period under review was positively impacted by the arrivals from both types of visitors; tourists (stay-overs) and excursionists (day trippers).

The majority; 98.0% of the visitor arrivals, came with the intention of vacationing, while 2.0% came with the intention of doing business.



| | 2008 | 2009 | 2010 | 2011 | 2012 | 2013 | 2014 | 2015 | 2016 | 2017 | 2018 | 2019 |
|---------|--------|--------|--------|--------|--------|--------|--------|--------|--------|--------|-------|--------|
| • Air | 2,848 | 1,471 | 1,352 | 1,603 | 1,530 | 1,585 | 1,387 | 1,251 | 1,054 | 1,181 | 781 | 1,548 |
| • Sea | 9,488 | 8,592 | 9,150 | 10,029 | 11,636 | 12,541 | 15,796 | 18,351 | 16,864 | 16,933 | 4,203 | 13,633 |
| • Total | 12,336 | 10,063 | 10,502 | 11,632 | 13,166 | 14,126 | 17,183 | 19,602 | 17,918 | 18,114 | 4,984 | 15,181 |

PASSENGER MOVEMENT

Passenger arrivals, which include both visitors and residents for this period under review, measured a 116.5% increase from 10,642 in 2018 to 23,036 in 2019. Anguilla’s inward passenger movement by sea continues to be the main mode of entry, facilitating 88.0% (20,268) of arrivals; of which, 15,616 (77.0%) of sea passenger arrivals entered at the Blowing Point terminal and 4,652 passengers (23.0%) arrived at the Sandy Ground terminal. Passenger arrivals by air at the Clayton J. Lloyd International Airport accounted for 2,768 (12.0%) of total passenger arrivals.

Departing passengers during this review period recorded an increase, with the total moving from 9,963 in 2018 to 24,034 in 2019; a 141.2% increase.

Of the three ports of exit, the two seaports cumulatively accounted for 86.4%, (20,758) of all departures, of which, the Blowing Point terminal facilitated the movement of 16,129 (77.7%) passengers and Sandy Ground with 4,629 (22.3%) passengers.

By air, 3,276 (13.6%) passengers departed Anguilla through the Clayton J. Lloyd International Airport.

TOURISTS (Stay-Over Visitors)

Tourists (stay-over visitors) to Anguilla for the month of January 2019 totaled 8,906, an increase of 217.6% over its corresponding 2018 figure of 2,804. This figure was the highest recorded figure of arrivals to the island for the ‘January’ period as far back as 1993, followed by January 2007 with a recorded 7,411 arrivals in contrast to January 2018 figure, which was the lowest ever recorded. The previous month, December 2018 also recorded the highest figure for a ‘December’ period as far back as 1993. Tourist arrivals for January 2019 accounted for 58.7% of the share of visitor arrivals, recording.

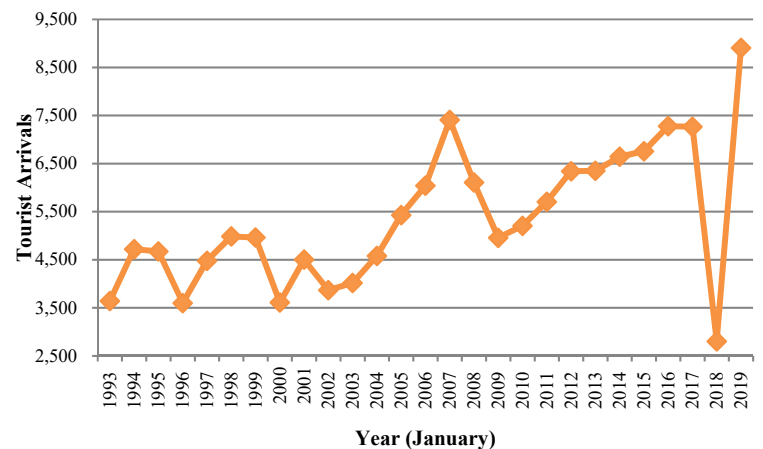


Figure 2: Tourist Arrivals, January 1993 - 2019

Tourists (Stay-Over Visitors) *continued*

The intended average length of stay of tourists decreased to 7.9 days from 11.7 days in January 2018. The majority of tourists arrivals (46.8%), intended to stay for 4 to 7 days, 22.7% between 1 to 3 days, 18.3% for 8 to 15 days, 9.9% for 16 to 22 days and 2.3% indicated 16 to 22 days.

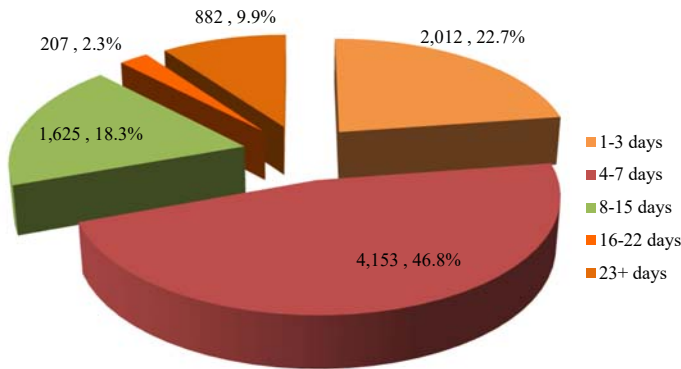


Figure 3: Tourist Arrivals by intended Length of Stay, Jan 2019

A review of the ten source markets from which tourists to Anguilla originated, shows that there were increases in eight (8) of the source markets in January 2019, contributing to the monthly increase. Two (2) source markets recorded

decreases. The largest increase was experienced in the Italian market with 431.0% (29 to 154 persons), followed by the U.S.A market with 308.2% and the German market with 290.9%. The decreases that were experienced in the tourist arrivals' source markets were for the 'French and Dutch West Indies' islands with 16.2% and 1.1% respectively.

Anguilla's main market, USA accounted for a 57.7% share of the tourist market by the country of residence.

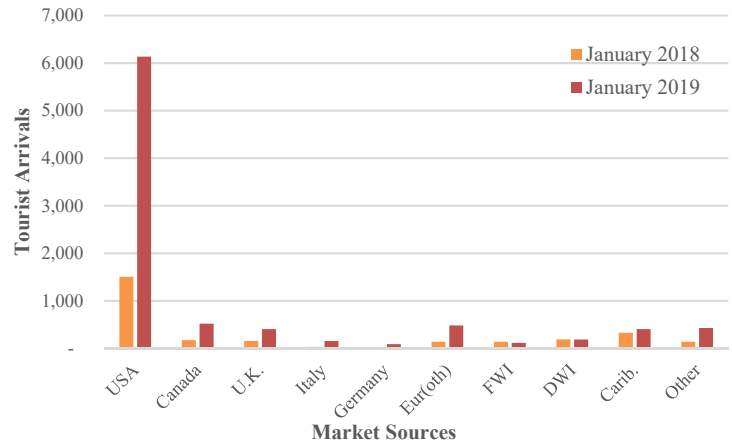


Figure 4: Tourist Arrivals by Country of Residence

EXCURSIONISTS (Day Trippers)

Excursionist arrivals for this period under review recorded a total of 6,275, up from the 2,180 arrivals recorded in January 2018. This period recorded an increase of 187.8% over the corresponding 2018 figure. The trend of previous years shows that excursionist arrivals have not returned to their pre hurricane Irma figures. January 2019 ranked 17th highest when data as far back as 1993 was reviewed. However, the most recent January 2017, pre Irma, recorded the 2nd highest figure in contrast to the most recent January 2018, post Irma, which recorded the lowest ranking (27th).

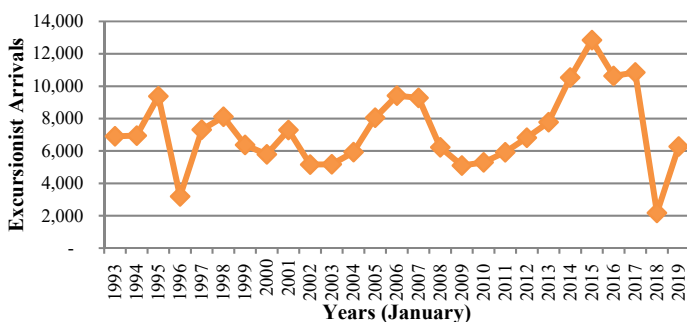


Figure 5: Excursionist Arrivals, January 1993 - 2019

All the source markets contributed to this increase in excursionist arrivals. The largest increase by source markets over their corresponding January 2018 figure was experienced in the 'Canadian' market with 964.6%. This was followed by the 'Italian', 'USA' and the 'U.K.' markets with 652.9%, 578.4% and 323.0% increases respectively. Anguilla's main source market 'USA', represented a 41.9% share of the excursionist market.

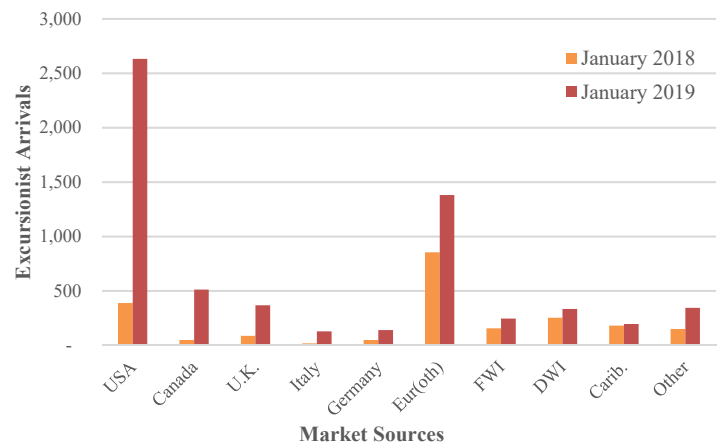


Figure 6: Excursionist Arrivals by Country of Residence

This report, along with other Tourism Data, is available at the Government of Anguilla Statistics Department's website: <http://gov.ai/statistics/tourism.htm>