



GOVERNMENT OF ANGUILLA
 Anguilla Statistics Department
Tourism Statistics Summary
September 2020

Sept 2020/2019
ARRIVAL ANALYSIS
 Visitors - ↓ 98.9%
 Tourists - ↓ 97.3%
 Excursionists - ↓ 99.8%

OVERVIEW

September's visitor arrivals continue to be at a near standstill as 45 arrivals to Anguilla's shores were recorded; a 98.9% decline from its corresponding September 2019 figure of 4,004. The COVID-19 global pandemic, which has negatively affected economies all over the world, prompted the closure of the country's borders and/or limited international travel to mitigate the spread of the virus. Anguilla officially closed its border on March 20, 2020 and to date has remained closed with limited travel under the government controlled repatriation and special arrangements. Noteworthy is the fact that this period, along with the month of October are considered to be Anguilla's slowest periods as historically, 'all things being equal' has register the smallest number of arrivals.

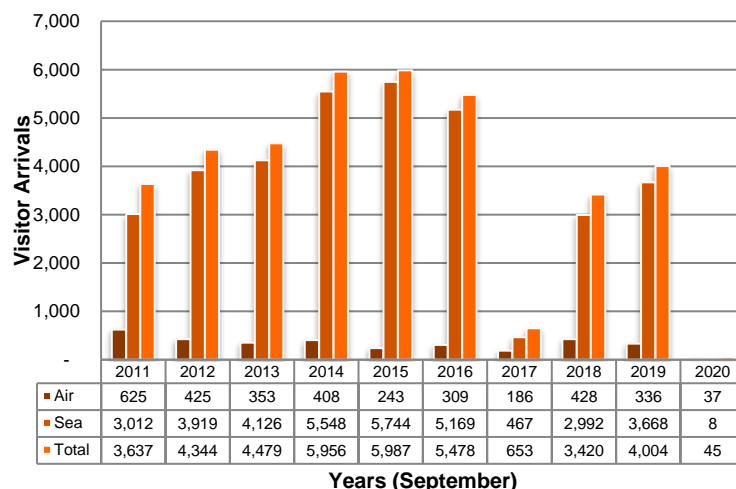


Figure 1: Visitor Arrivals: September 2011 – 2020

PASSENGER MOVEMENT

Passenger arrivals, which include both visitors and residents for September 2020, measured a 98.9% decline from the 10,386 in 2019 to 119 passengers in 2020. This was due to the limited international movement as well as the closure of the ports. However, the movement may have been as a result of the Government of Anguilla's controlled repatriation exercise.

Anguilla's inward passenger movement by sea, facilitated 21.0% (25) of arrivals; with 92.0% (23) arrivals at the Blowing Point port and 8.0% (2) at Sandy Ground (Road Bay). Arrivals by air at the Clayton J. Lloyd International Airport accounted for 79.0% (94) of total passenger.

Departing passengers recorded a decline of 98.6%; with the total moving from 10,651 in 2019 to 154 passengers in 2020. The number of departures relative to arrivals may have consisted of visitors who remained after the closure of the borders, who were returning to their country of residence, in addition to those that may have had other permitted and/or special travel arrangements.

Of the three ports of exit, the two seaports cumulatively accounted for 51 (33.1%), of all departures; of which, the Blowing Point terminal facilitated the movement of 49 (96.1%) passengers and Sandy Ground 2 (3.9%) passengers. By air, 103 (66.9%) passengers departed Anguilla through the Clayton J. Lloyd International Airport.

TOURISTS (Stay-Over Visitors)

Tourists (stay-over visitors) to Anguilla for the month of September 2020 recorded 39 individuals. This is the lowest ever recorded figure for a September period; recording a 97.3% decline from its 2019 figure of 1,457.

September is historically known to be the slowest period along with October, however given the COVID-19 pandemic a review of the past six months (April – September), September recorded the highest number of tourist, followed by August with 38 arrivals and the least in April and May with zero (0) arrivals. The 3rd quarter 2020 for this type of visitor recorded a total of 81 arrivals to our shores.

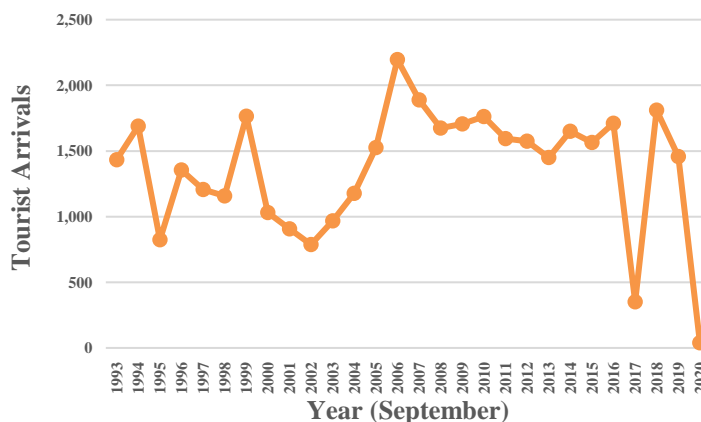


Figure 2: Tourist Arrivals, September 1993 – 2020

Tourists (Stay-Over Visitors) *continued*

The intended average length of stay of tourists increased to 18.4 days from the 10.4 days in September 2019. 76.9% of tourist arrivals intended to stay for 23 or more days, followed by 20.5% that intended to stay for 1 – 3 days and 2.6% whom intended to stay for 8-15 days.

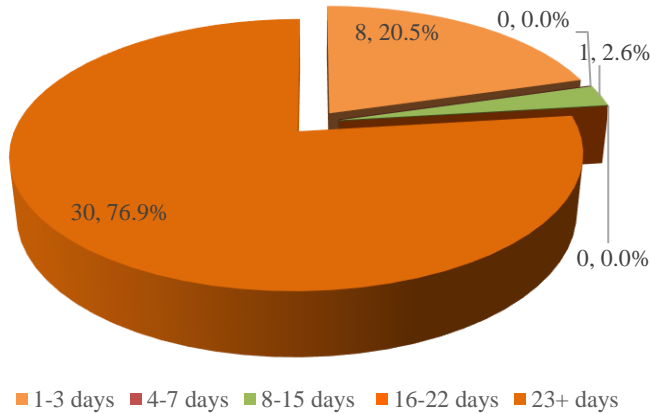


Figure 3: Tourist Arrivals by intended Length of Stay, September 2020

A review of the ten (10) source markets from which tourists to Anguilla originated showed that they all contributed in the overall decline of the tourist figure. There were visitors only from USA (-95.3%), Canada (-95.0%), U.K. (-96.7%), Germany (-85.7%), Other Europe (98.0%), French West Indies (-99.3%), Caribbean (-97.6%) and Other countries (-98.5%), all recording declines over their corresponding 2019 figures. Anguilla’s main market, USA accounted for less than half of the share of the tourist market by the country of residence with 46.2%.



Figure 4: Tourist Arrivals by Country of Residence

EXCURSIONISTS (Day Trippers)

Excursionist arrivals for this period under review stood at 6 individuals, down from the recorded figure of 2,547 in September 2019, a 99.8% decline.

The global pandemic resulting in limited travel and the closure of the ports, may have further impacted the arrivals of this type of visitor, to register the lowest recorded figure for a September month as far back as 1993.

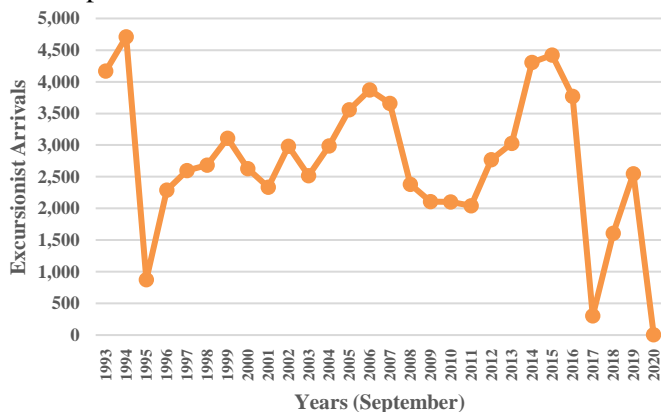


Figure 5: Excursionist Arrivals, September 1993 - 2020

A review of the excursionist market by the ten (10) source markets from which this type of visitor originated, shows that all ten (10) source markets recorded declines. However, excursionist arrivals were only recorded for the source markets U.K. (-94.3%), Dutch West Indies (-99.6%) and the Caribbean (-98.6%) which all experienced decreases.

There were no arrivals for Anguilla’s main source market during this period for this type of visitor.

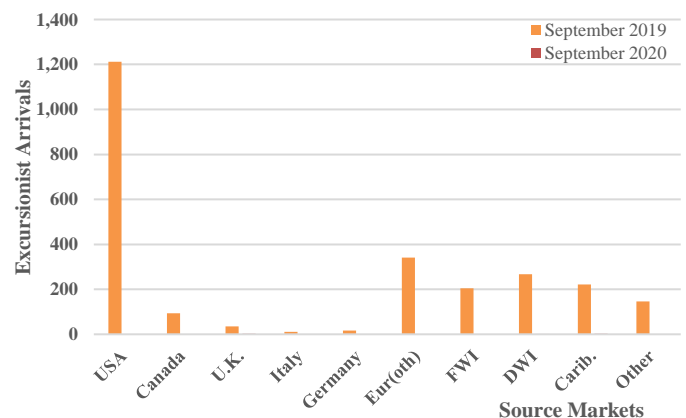


Figure 5: Excursionist Arrivals by Country of Residence

This report, along with other Tourism data, is available at the Government of Anguilla Statistics Department’s website: <http://statistics.gov.ai>

ANGUILLA STATISTICS DEPARTMENT
 P.O.BOX 60 | THE VALLEY | ANGUILLA
 BRITISH WEST INDIES
 Telephone: + (264) 497-5731 | Fax: + (264) 497-3986
 Email: statistics@gov.ai

'Sound Statistics for Sustainable Development'